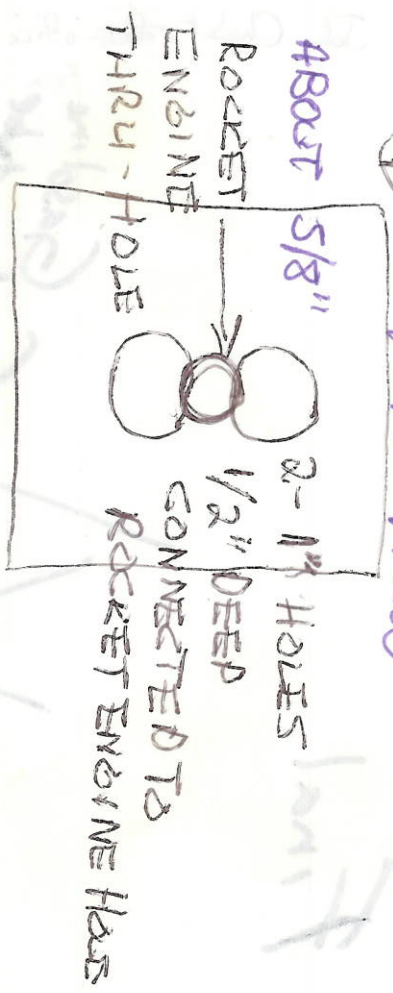


① TOP VIEW



TOP

① MOUNT ROCKET ENGS. W/HOT MELT GLUE

SIZE "A"

② WRAP & TAPE KANTER TO LEAD WIRE INSERT & STAPLE DOWN LEAD WIRE

③ FILL CUPS WITH GUNPOWDER TO TOP LEVEL LAY MASKING TAPE OVER ALL

④ WRAP IN PLASTIC BAGS, LET LEAD WIRE COME OUT SIDE OF BAG

⑤ BEND WIRE AROUND UNIT - STAPLE ONLY ON SIDE & BOTTOM - DO NOT PUNCTURE TOP PART OF BAG



⑥ SLIDE STIFF CARD BOARD TUBE & LOCK ON TO WIRES IN HOLES

4x4x4
B LOCK

GUNPOWDER IN 2 BIG HOLES CONNECTED TO MAIN HOLE

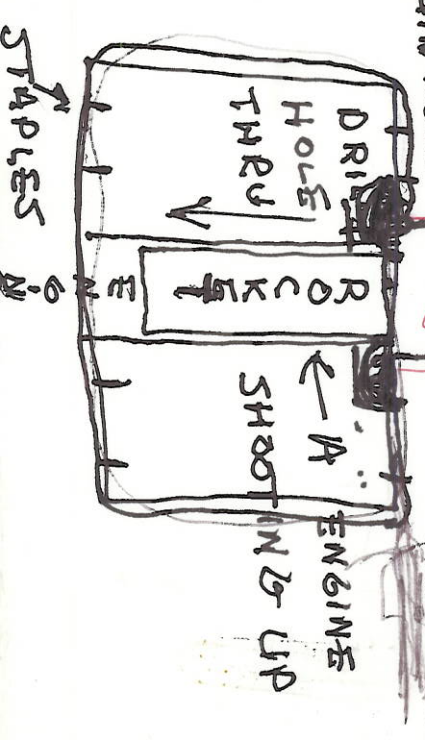
LOOSELY FILL WITH A STRIP FROM PAPER TOWEL

6-8 FLAPS CUT IN CARBONAR TUBE. NEED HEAVY DUTY TUBE

HEAVY GAUGE WIRE -

FUSE WIRE

← A ENGINES SHOOTING UP



WRAP SMALL TERPES OF SMALL STICKS
TIED WITH STRINGS AT TOP

PUT ADDITIONAL TERPES WOOD ON
ABOVE

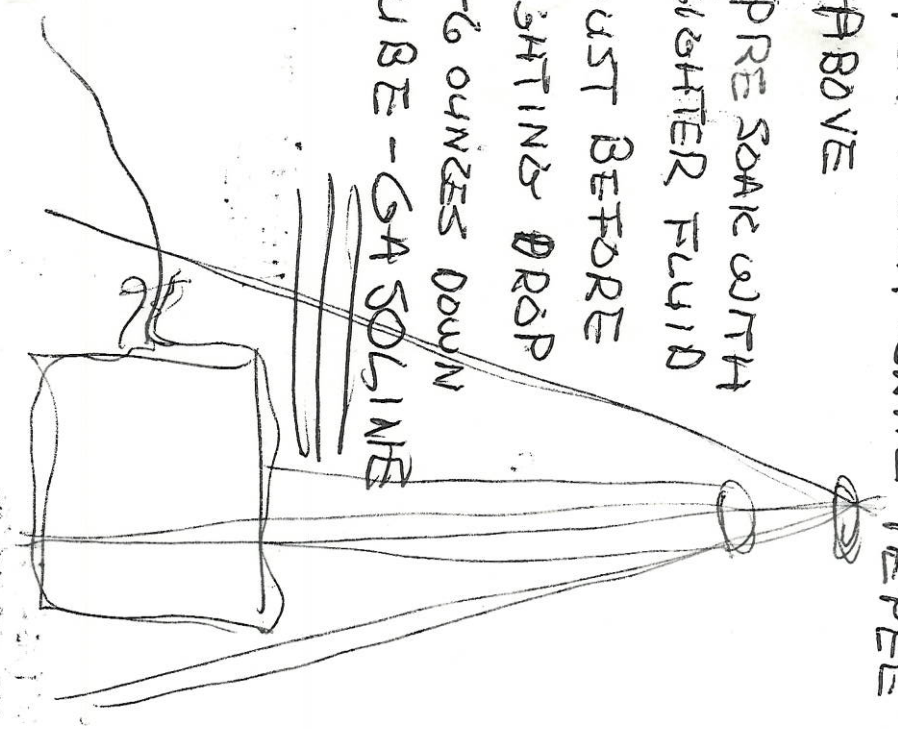
PRE SOAK WITH
LIGHTER FLUID

JUST BEFORE

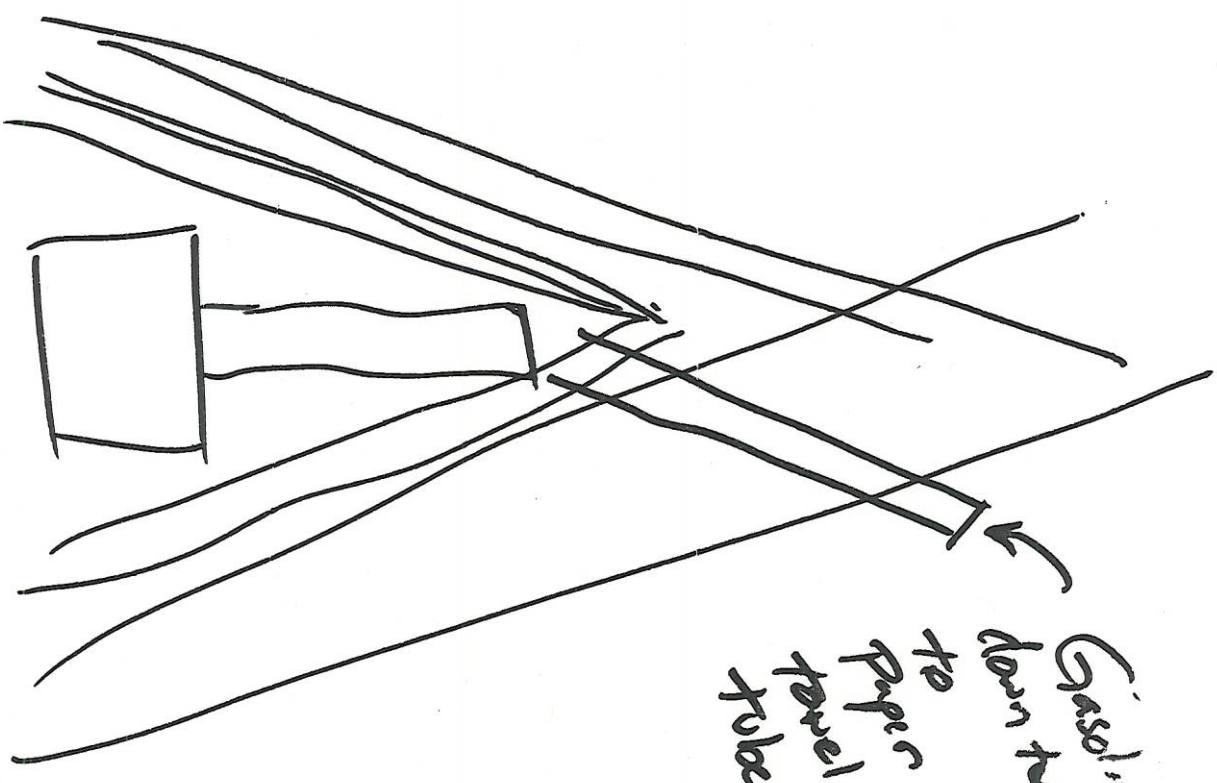
LIGHTING DROP

4-6 OUNCES DOWN

TUBE - GASOLINE



Final



Gasoline
down tube
to paper
parcel
tube

Jim Clark ~~Ph.D.~~ Office 485-2230
Fax: 3195

630-8215